

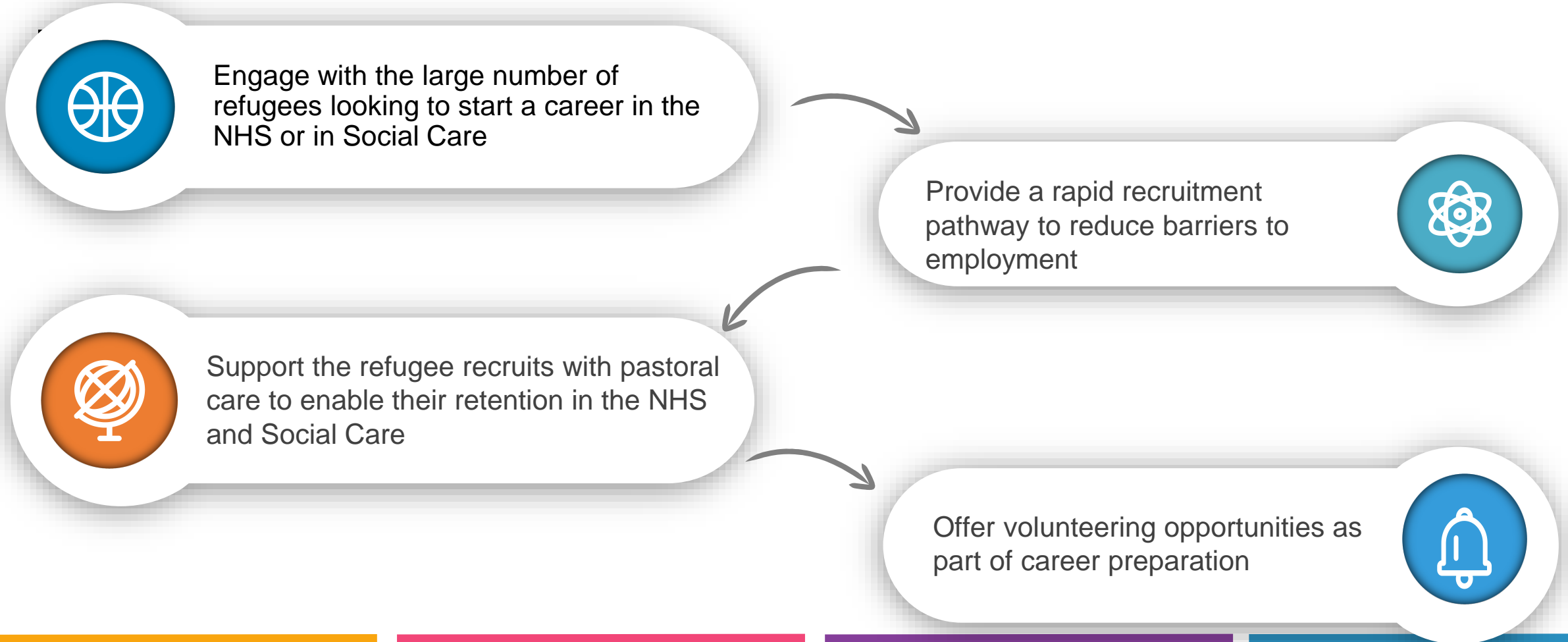
NWL NHS Refugee Employment Programme

Anthony Sembatya – Programme Manager

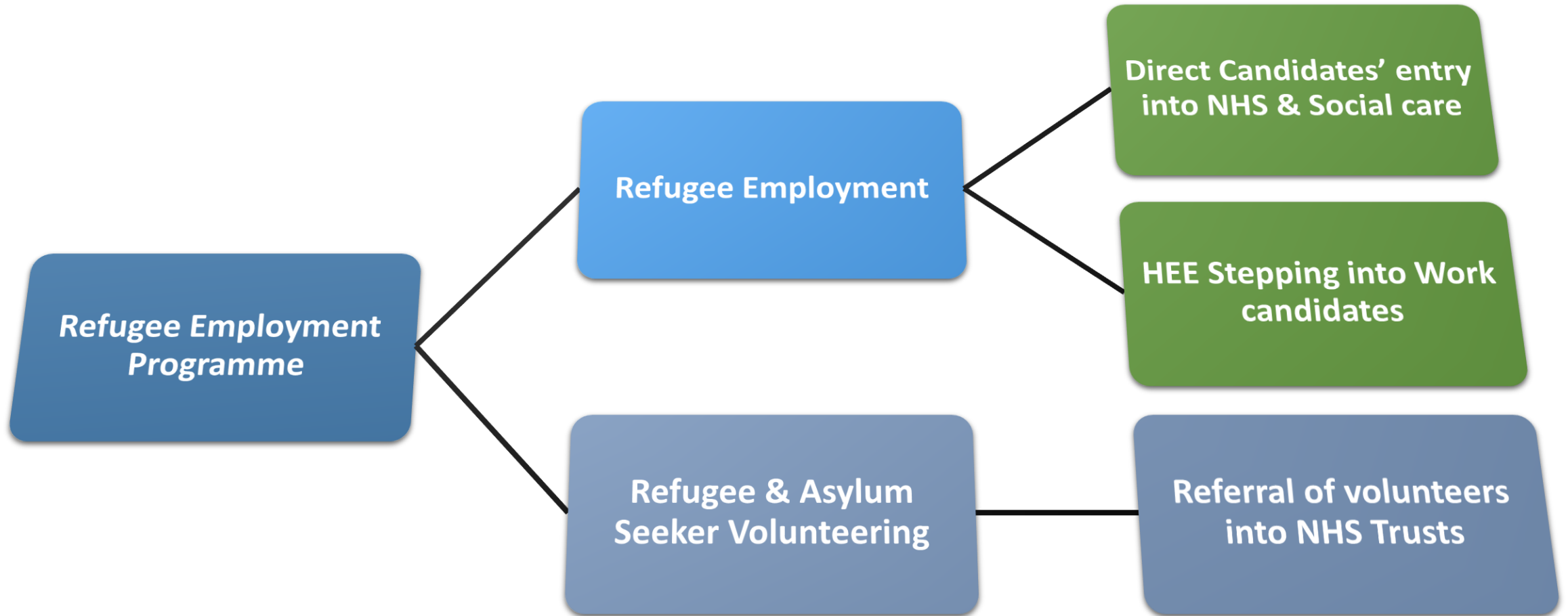
Nathan Christie-Plummer – Director of Workforce

October 2024

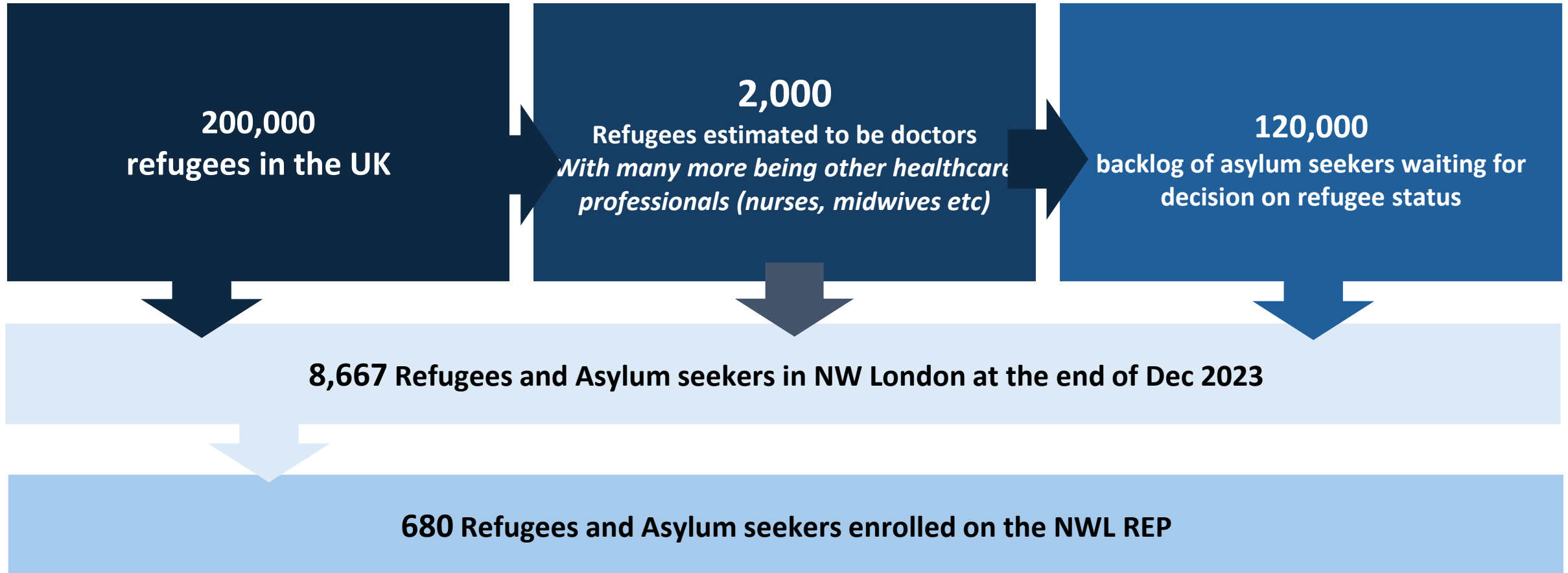
1. The purpose of the NWL REP is to;



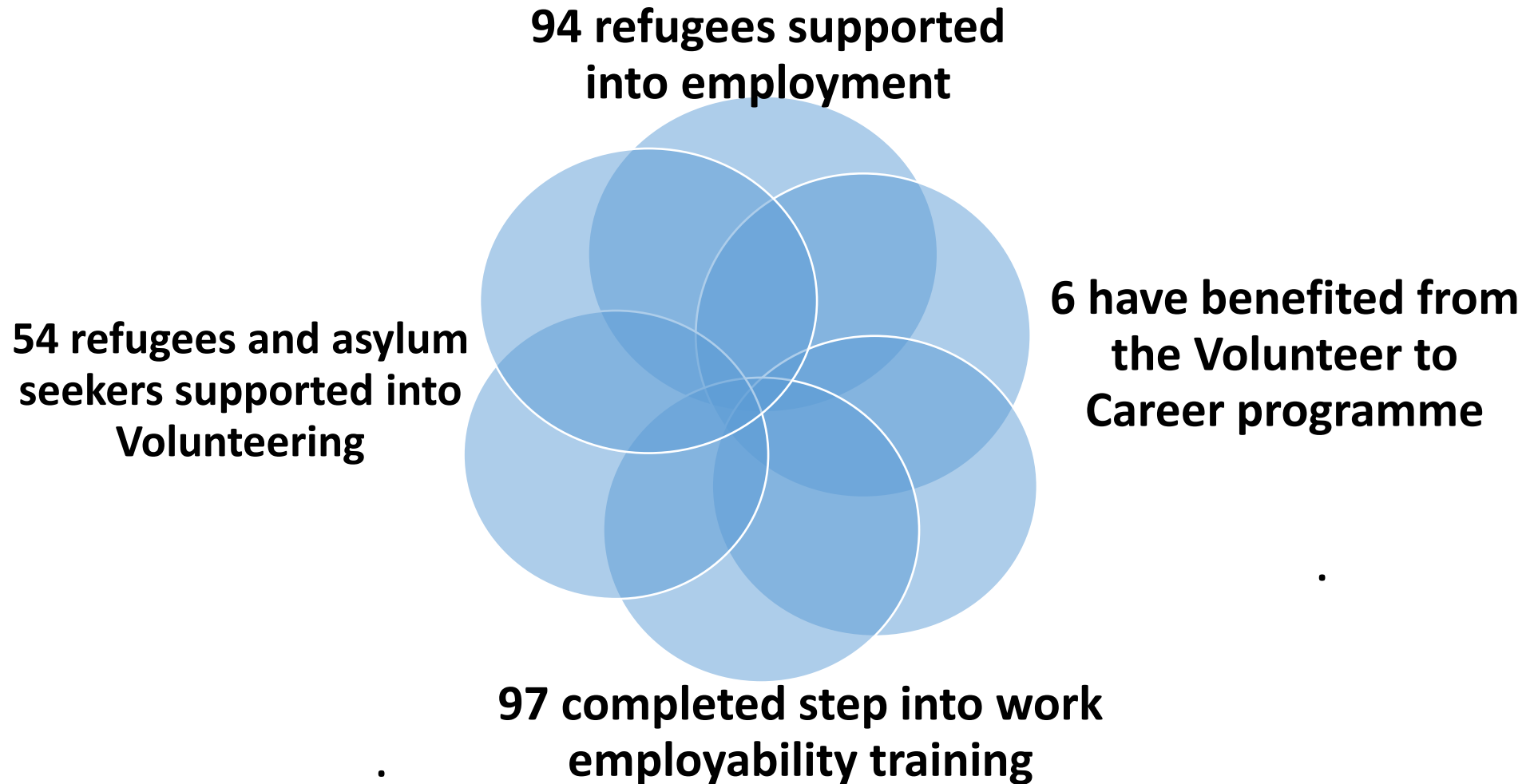
2. Structure of the programme



3. Refugees into Employment & Volunteering.



4. Refugees into Employment & Volunteering.



5. Benefits

1

Reduction in social isolation and better integration for refugees and asylum seekers who are accommodated in local hotels

2

Channelling the NHS' focus on utilising skills and talents of "in country" refugees

3

Reduction in the economic and social burden of accommodating refugees in hotels and other funded accommodation

4

Reducing inequalities among disadvantaged communities

6. Challenges

- Slow absorption of candidates into roles in the NHS leading to frustration and loss of trust by candidates in the project.
- Slow engagement from social care partners into the programme resulting in loss of opportunity to utilise refugee candidates.
- Low pace of replication in other areas causing the programme to be overwhelmed by demand from other regions

7. Programme partners

- Imperial College Healthcare
- Central London Community Healthcare NHS Trust
- Central North West London NHS Trust
- Hillingdon NHS Foundation Trust
- London North West Hospitals NHS Trust
- London Ambulance NHS Trust
- Chelsea and Westminster NHS Trust
- West London NHS Trust



Volunteer to Career



The Prince's Responsible Business Network



❖ MS Development Charity



shaw trust



West Thames College London



For further information – Contact

Anthony Sembatya or Nathan Christie-Plummer

anthony.sembatya@nhs.net

nathan.christie-plummer@westlondon.nhs.uk